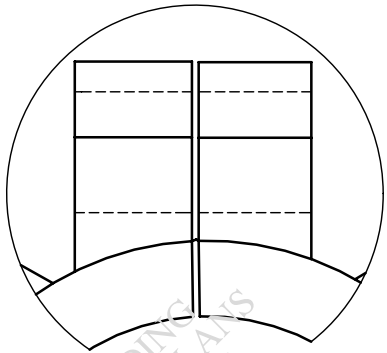
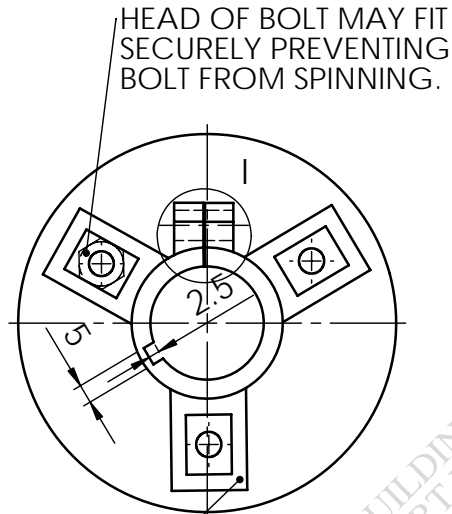


1MM SLIT TO ALLOW PINCH BOLT TO SECURE HUB ONTO AXLE

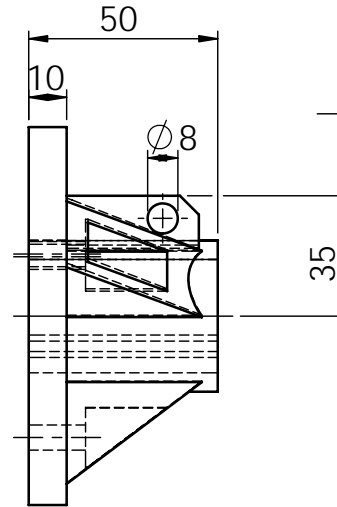


DETAIL I

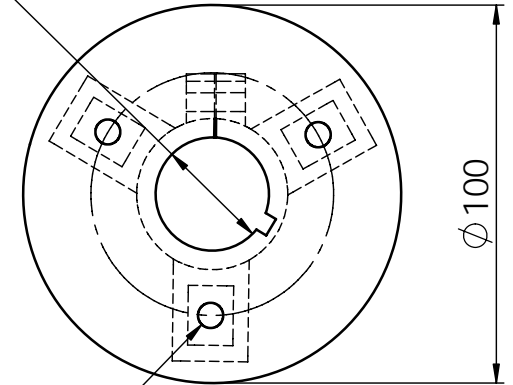
3 REINFORCING SHOULDERS EQUI. SPACED. CAN BE WELDED IN PLACE IF REQUIRED.



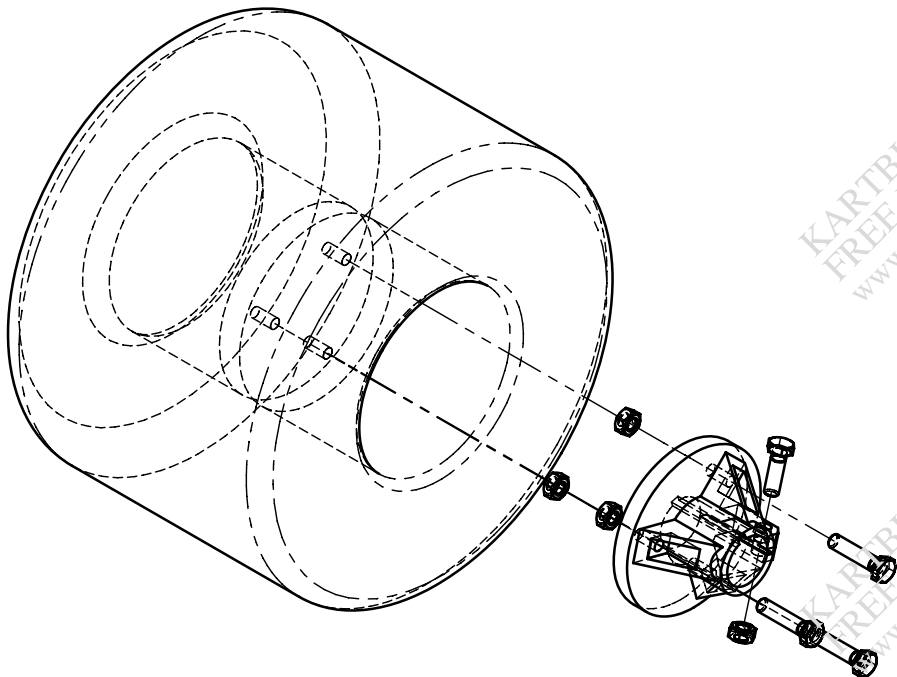
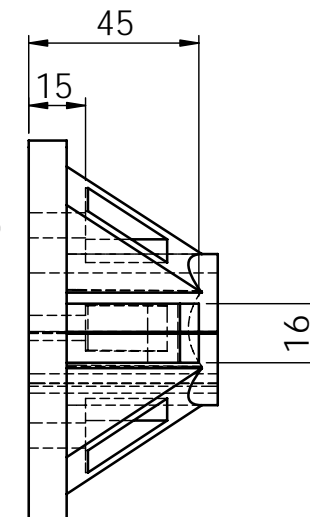
HEAD OF BOLT MAY FIT SECURELY PREVENTING BOLT FROM SPINNING.



$\phi 30$



3 x $\phi 8$ HOLES ON $\phi 65$ PCD



NOTE:
IT MAY BE POSSIBLE TO BUY THESE ALUMINIUM HUBS FROM A KARTING CATALOGUE! THE HUB MUST SUIT THE TYPE OF WHEEL BEEN USED!

MATERIAL:

- ALUMINIUM
- TURNED/MANUFACTURED
- POSSIBLY WELD ON REINFORCING SHOULDERS.

KARTBUILDING

FREE RACING KART PLANS

REAR HUBS AND WHEELS

www.kartbuilding.net

DRG. NO.: 7 DATE: 24/07/03

© STEPHEN BURKE